



2015 PRECEPT

CLASS A MOTORHOMES BY JAYCO



PRECEPT

LUXURY ABOVE YOUR EXPECTATIONS



2

YEAR
WARRANTY

Read more about our industry-leading **2-YEAR WARRANTY** on the back cover!

PRECEPT® CLASS A MOTORHOMES BY JAYCO®

YOUR TICKET TO CLASS A LUXURY

The world is yours to conquer in the 2015 Jayco Precept. Built on an enhanced Ford F53 chassis, this Jayco Class A blends comfort and handling in one of our most luxurious motorhomes yet. Designed for people who love to travel well, Precept exceeds expectations — right down to the details in our well-appointed cabs, functionally beautiful kitchens and comfortable master suites. So raise the bar with Precept.



JRIDE

HANDS DOWN, THE BEST RIDE. Read more about our Ride and Handling package on Page 6!



DESIGNED FOR THE JOURNEY

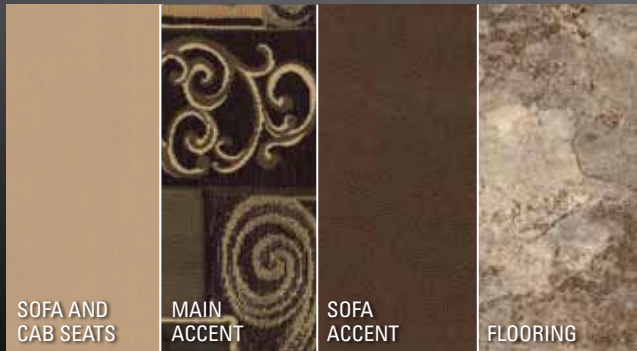
At Jayco, your journey starts on the road, so Precept equips you for a comfortable ride with an ergonomic, low-profile dash, expansive windshield and 6-way power in both cab seats. And unlike most Class As, Precept offers a one-piece fiberglass roof, a huge benefit to you.



PRECEPT 29UM | CAPPUCCINO

INTERIOR DÉCOR CHOICES

FRENCH VANILLA



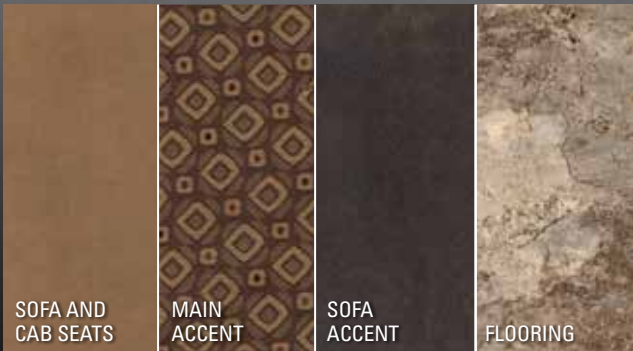
SOFA AND CAB SEATS

MAIN ACCENT

SOFA ACCENT

FLOORING

CAPPUCCINO



SOFA AND CAB SEATS

MAIN ACCENT

SOFA ACCENT

FLOORING

INTUITIVE DETAILS

Precept packs innovative luxuries, including a sliding countertop extension, motorized 40" TV lift (select models), LED lighting and frameless windows.



Spacious kitchens with a sliding countertop extension



Queen-sized bed with comfortable Denver Mattress*



Bunk beds increase your sleeping capacity (29UM, 29UR)



Customer Value Package 40" LED exterior television

* Customer Value Package



RIDE AND HANDLING.
DEFINED.



SUPERIOR CONSTRUCTION MEETS **A SUPERIOR RIDE.**

WALL CONSTRUCTION

- 1 Vacuum bonded:** Features laminated layers of high-gloss fiberglass, luan, aluminum framing, R-8 bead-foam insulation and vinyl paneling
- 2 Seamless fiberglass front and rear cap:** Increases aerodynamics, while cap adds durability and leak protection where it's needed most
- 3 Frameless windows:** An industry-first standard on Class A gas motorhomes

FLOOR CONSTRUCTION

- 4 Vacuum bonded:** Features laminated layers of Darco underbelly, 1/8" luan, a welded aluminum frame, R-9 bead-foam insulation and 5/8" Structurwood
- 5 Welded aluminum frame:** Lighter and more corrosion-resistant than competing steel frames, provides more cargo capacity

ROOF CONSTRUCTION

- 6 Vacuum-bonded layers:** Features layers of fiberglass, 5" arched aluminum trusses, 1/4" plywood decking, R-24 bead-foam insulation and vinyl soft-touch pad
- 7 Seamless fiberglass shield:** Is superior to competing synthetic rubber roofs that require aftermarket kits to revitalize faded rubber



eco advantage™

Scan this QR code with your smartphone to watch a video about our long-term commitment to protecting the environment.

JRIDE.JAYCO.COM

STABILIZER BAR

- A** Precept's enhanced dual stabilizer bars raise and lower each side of the unit to similar heights, increasing the torsion rate up to 2 1/2 times more than stock stabilizer bars.

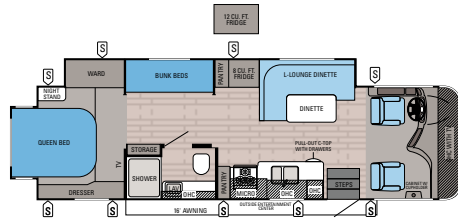
BILSTEIN SHOCKS

- B** Bilstein shock absorbers, standard on Ford's F53 chassis, reduce bouncing and eliminate excessive sway. A unique monotube design doesn't trap heat, reducing shock failure.

JOUNCE BUMPERS

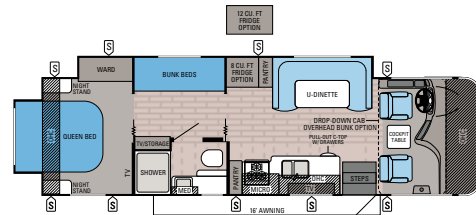
- C** Variable-rate jounce bumpers, positioned under the frame, complement the Bilstein shock absorbers and dual stabilizer bars, completing Precept's smooth ride.

FLOORPLANS



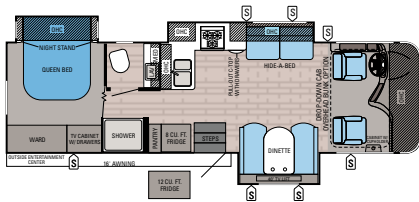
PRECEPT | 29UM

Exterior Length: 32' 3" Exterior Height: 149" Sleeps: 6



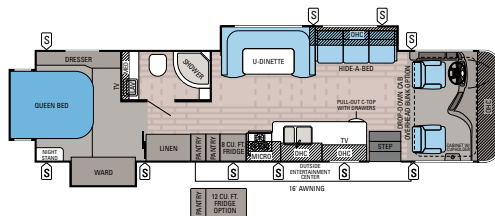
PRECEPT | 29UR

Exterior Length: 32' 1" Exterior Height: 149" Sleeps: 6-8



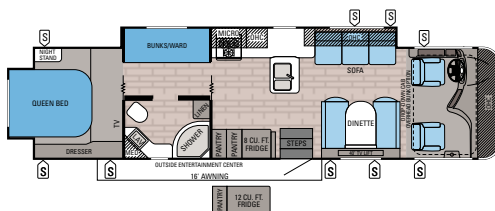
PRECEPT | 31UL

Exterior Length: 32' 3" Exterior Height: 149" Sleeps: 4-7



PRECEPT | 35UN

Exterior Length: 36' Exterior Height: 153" Sleeps: 4-7



PRECEPT | 35UP

Exterior Length: 36' Exterior Height: 153" Sleeps: 6-9

STANDARDS AND OPTIONS

CUSTOMER VALUE PACKAGE

- JRide Package: Bilstein shocks, stabilizer bar, Hellwig helper springs and rubber isolation body mounts
- Automatic hydraulic leveling jacks
- Touch-screen, in-dash sound system with built-in GPS, CD/DVD, MP3 and input jack
- Back-up and side-view cameras with monitor
- Frameless windows
- Electric patio awning with LED lights
- Slideout cover awnings
- Exterior entertainment center with 40" LED TV and single-disc DVD/FM radio
- Onan Marquis Gold Genset 5,500-watt generator
- 400-watt inverter
- 50-amp electrical service
- 13,000-BTU air conditioner (2)
- Tankless water heater
- Solid-surface kitchen countertops with integrated sink
- LED living room TV
- Day/night solar shades
- Pillowtop Denver Mattress

STANDARD EXTERIOR EQUIPMENT

- Cream high-gloss fiberglass walls
- Seamless crowned fiberglass roof
- One-piece fiberglass front and rear cap
- Bead-foam insulation (R-24 max roof, R-9 max floor, R-8 max walls)
- Electric-powered entrance step
- Lockable pass-through storage compartments with slam latches
- 12V house battery
- 12V demand water pump
- Chrome grill

STANDARD INTERIOR EQUIPMENT

- 84" interior ceiling height with padded vinyl ceiling
- High-intensity recessed LED ceiling lights
- Raised-panel cabinet doors throughout
- Ball bearing drawer guides
- 3-burner range with 9,000-BTU SuperBurner and piezo igniter
- Convection microwave oven
- 8 cu. ft. gas/electric refrigerator with raised-wood panel doors
- Water filtration system
- Dream Dinette mechanism, raises/lowers table top
- 2-point lap safety belts on all living area seats
- Auto-ignition 31,000-BTU ducted furnace (29UM, 31UL)
- Auto-ignition 35,000-BTU ducted furnace (35UN, 35UP)
- Prep for satellite dish
- Cable TV hookup with RG6 coax
- Digital antenna with signal booster
- One-piece shower with glass door, skylight and light
- Marine toilet with foot flush
- Bathroom powered roof vent with wall switch
- Queen-sized bed with mega under-bed storage
- Bedroom 22" LED TV
- Denver Mattress bunk mats (300-lb. rating) (29UM)

STANDARD DRIVING EQUIPMENT

- Ford F53 18,000-lb./22,000-lb GVWR chassis
- 6.8L Triton V-10 362 HP gas engine with electronic fuel injection and 457 ft-lb torque
- 5-speed automatic TorqShift transmission with overdrive and tow-haul mode
- 130-amp alternator
- 56-lb. propane tank
- 12V chassis battery
- 19.5" Goodyear radial tires
- Front and rear disc, 4-wheel anti-lock brakes
- 5,000-lb. rear hitch receiver with dual connector
- 7-pin plug

- 6-way power driver and passenger seats
- Flush-mount LED marker lights
- Third brake light

OPTIONS

- 12 cu. ft. four-door refrigerator
- Drop-down overhead bunk in cab area (select models)
- Beachstone exterior paint
- Splendor exterior paint

EXTERIOR CHOICES



ATLANTIS BLUE



CRIMSON RED



BEACHSTONE



SPLENDOR

SPECIFICATIONS

MODELS	DIMENSIONS			WEIGHTS (LBS.)		DRIVING FEATURES		FURNACE			TANKS (GALS.)		
	MODEL	EXT. LENGTH	EXT. WIDTH	EXT. HEIGHT (WITH A/C)	INTERIOR HEIGHT	GROSS VEHICLE WEIGHT RATING	GROSS COMBINED WEIGHT RATING	ENGINE/SIZE	WHEEL BASE	AUTO-IGNITION (BTUS)	FRESH	GRAY	BLACK
29UM	32' 3"	101"	149"	84"	18,000	23,000	6.8L TRITON EFI V-10	190"	31M	31M	71.5	41	51.5
29UR	32' 1"	101"	149"	84"	18,000	23,000	6.8L TRITON EFI V-10	190"	31M	31M	71.5	41	51.5
31UL	32' 3"	101"	149"	84"	18,000	23,000	6.8L TRITON EFI V-10	190"	31M	31M	71.5	41	51.5
35UN	36'	101"	153"	84"	22,000	27,000	6.8L TRITON EFI V-10	228"	35M	35M	71.5	41	51.5
35UP	36'	101"	153"	84"	22,000	27,000	6.8L TRITON EFI V-10	228"	35M	35M	71.5	41	51.5

Gross Vehicle Weight Rating (GVWR): The maximum permissible weight of the motorhome, including the Unloaded Vehicle Weight (UUV) plus passengers, personal items, all cargo, fluids, options and dealer-installed accessories. The GVWR is equal to or greater than the sum of the UUV and the Cargo Carrying Capacity.

Gross Combined Weight Rating (GCWR): The maximum allowable combined weight of the motorhome used as a tow vehicle and the attached towed vehicle.

It is important for your safety and enjoyment that you are aware of the weights and tow ratings of the RV you select. Consult a competent advisor for questions or advice. Whether you are new to RVing or a veteran, get a feel for the performance of your RV before heading out on the roadways. When you tow a vehicle with your RV, you must drive differently than when you drive a single vehicle. Practice hooking up, driving, backing up and braking in a safe environment or seek out professional instruction. Jayco affixes a weight label to each RV which lists weight information for that vehicle. Refer to that label to verify the vehicle will meet your requirements. See specifications chart above.

NOBODY OFFERS A BETTER WARRANTY

2
YEAR
WARRANTY



Your quality time
starts with peace of mind.

For 45 years, Jayco has helped generation after generation create family memories—good, old-fashioned family fun built around a campfire with a Jayco RV nearby. In all of that time, we learned something important—quality time starts with peace of mind, which is why Jayco offers an industry-leading 2-year limited warranty.*

Nobody offers a better warranty than Jayco.

*For a copy of our limited warranty with full terms and conditions, please contact your Jayco dealer.



Generations of family fun.

LAMESA RV
EXPERIENCE LIFE
www.lamesarv.com
800-496-8778

300 JAYCO DEALERS

The fun starts with your local dealer

From the sales experience to service after the sale, we consider our dealers to be an important part of the Jayco family. Establishing a solid relationship with your local Jayco dealer is a key component in the enjoyment of your new Jayco. By purchasing from a local dealer, you will have a convenient location for sales, parts and service support. We hope you consider them a part of your camping family.

5-YEARS FREE Roadside Assistance

Travel worry-free with Ford's Roadside Assistance program, yours at no cost during the first five years of ownership. This program is offered through Coach-Net, the country's largest RV emergency road service, and gives you immediate access to assistance.

Jayco, Inc., P.O. Box 460, Middlebury, IN 46540

See dealer for further information and prices. All information in this brochure is the latest available at the time of publication approval. Jayco reserves the right to make changes and to discontinue models without notice or obligation. Photos in this brochure may show optional equipment and props for photography purposes. RVs built for sale in Canada may differ to conform to Canadian codes. ©2015 Jayco, Inc. 15-PRCT-PL 0115-10K Printed in U.S.A.



www.jayco.com